

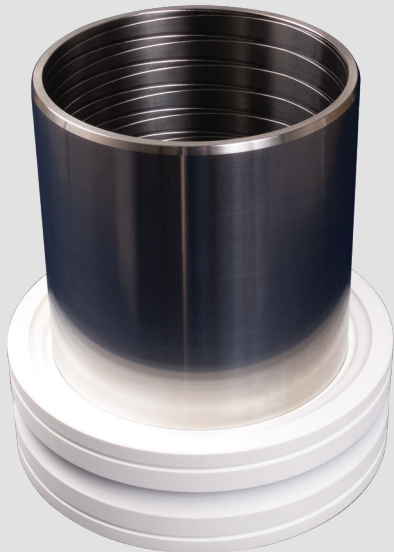
PYI Inc. stocks rudder bearings made by Jefa Rudder Systems that are designed to replace the original bearings used in the J-120.



J-120 Upper Bearing - Part #0642J120

Self aligning roller bearing with a mounting flange. The ball is easily removable for cleaning and service if needed.

- The bearing is shipped with a new stainless steel sleeve to bond to the rudder stock. The sleeve is drilled for the upper and lower pins to be used from the original installation.



Lip Seal for J/120 available. Part #06PUR190

J-120 Lower Bearing - Part #0641J120P

Designed to upgrade the originally installed lower bearing.

- Machined, engineered plastic housing to avoid electrolysis and corrosion.
- The bearing is shipped with a new stainless steel sleeve to bond to the rudder stock.
- "Keep It Simple" design offers reliability, light weight, and eliminates complicated roller cages that can fatigue or corrode.